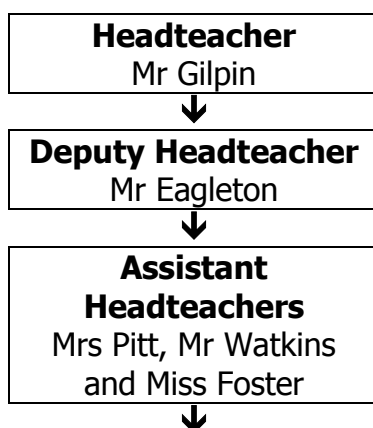
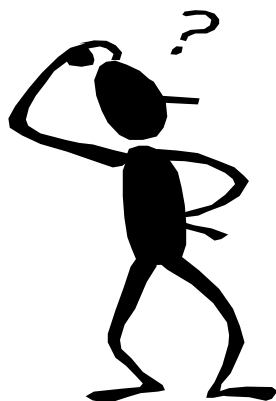




Information for Parents Booklet 2019 - 2020

WHO'S WHO?



Abbott House	Aston House	Livingstone House	Stokes House
Mrs Kavanagh (Head of House)	Acting Head of House (Mr Poole)	Mr Kavanagh (Head of House)	Mrs Crowe (Lead Tutor)
Mrs Davies (Senior Pastoral Manager) gdavies@pittville.gloucs.sch.uk			

Useful information and phone numbers

School Telephone Number	01242 524787
School Fax Number	01242 228750
School E-mail Number	achieve@pittville.gloucs.sch.uk
School Website	www.pittville.gloucs.sch.uk
Twitter	@PittvilleSchool
Educational Welfare Officer/Attendance	Mr Bond – 07715 083948
Shire Hall	01452 425000

School Day

Wednesday – School Day

08:30	Arrive in school	8:30	Arrive in school
08:35 – 08.45	Morning Registration	8:35 – 8:45	Morning Registration
08:45 – 09:45	Lesson 1	8:45 – 9:45	Lesson 1
09:45 – 10:45	Lesson 2	9:45 – 10:45	Lesson 2
10:45 – 11:05	Break	10:45 – 11.05	Break
11:05 – 12:05	Lesson 3	11:05 – 12:05	Lesson 3
12:05 – 13:05	Lesson 4	12:05 – 13:05	Lesson 4
13:05 – 14:05	Lunch and tutor time	13:05 – 13.40	Lunch
14:05 – 14:10	Movement time	13:45 – 14:45	Afternoon Registration and Period 5
14:10 – 15:10	Lesson 5	14:45	End of day
15:10	End of day		

Up to date copies of statutory policies can be found on our school website

www.pittville.gloucs.sch.uk

Term 1

2nd – 6th September		Week 1
Monday 2 nd September Tuesday 3 rd September Wednesday 4th September	All day All day 08:30 10:45 14:45	Staff Training Day 1 – school closed to students Staff Training Day 2 – school closed to students Year 7 in school Year 11 in School Early Finish
Thursday 5 th September Friday 6th September	08:35 12:20	All Years in school Year 7 photos Year 10 Photos School closes early for staff training
9th – 13th September		Week 2
Wednesday 11th September Wednesday 11 th – Friday 13 th September Friday 13 th September	14:45 18:00 – 19:00	Early Finish Year 9 GCSE Information Evening Year 8 Disney Trip Sliver D of E Expedition 2 (Assessment)
16th – 20th September		Week 1
Tuesday 17 th September Wednesday 18th September	19:30 14:45	Women in Black Trip Early Finish
Thursday 19 th September	18:00 – 19:00 All day	Year 11 Information Evening Drayton Manor Rewards Trip
23rd – 27th September		Week 2
Wednesday 25th September Thursday 26 th September	9:00 14:45 All day	FOPS Bags 2 School Collection Early Finish Spanish Day
30th September – 4th October		Week 1
Monday 30 th September – Friday 4 th October Tuesday 1 st October Wednesday 2 nd October	All week 9:30 – 11.30 9:30 – 10:30 13.05 18:00 – 20:00	Open week - Tours of the school National Apprenticeship Show – Year 10 National Apprenticeship Show – Year 11 School to close at 13:05 Open Evening
7th – 11th October		Week 2
Wednesday 9th October Thursday 10 th October Thursday 10 th - Friday 11 th October	14:45 All day	Early Finish World Mental Health Day Year 7 Croft Farm Trip
14th – 18th October		Week 1
Wednesday 16th October Thursday 17 th October	14:45 16:00 – 19:00	Early Finish Year 7 Tutor Evening
21st – 25th October		Week 2
Tuesday 22 nd – Wednesday 23 rd October Wednesday 23rd October Thursday 24 th October Friday 25th October	 14:45 16:00 – 19:00 15.10	Year 8 Eden Project Early Finish Year 11 Consultation Evening End of Term 1
Monday 28th – Friday 1st November - End of Term 1 Holiday		

Term 2

4th – 8th November		Week 1
Tuesday 5 th November Wednesday 6th November Thursday 7 th November	14:45 14:30 – 17:00	Holy Trinity Literacy Day – Year 8 Literacy Ambassadors Early Finish Year 9/10 Art Trip to London Post 16 Evening
11th – 15th November		Week 2
Tuesday 12 th November Wednesday 13th November Friday 15 th November	All day All day All day 14:45 18:00 – 20:00 All day All day	Year 11 Textiles Mock (1/2 group) Year 11 Textiles Mock (1/2 group) Year 11D Art Mock Early Finish Achievement Evening Year 11 B and C Art Mock Year 9 Enterprise Day
18th – 22nd November		Week 1
Monday 18 th – Tuesday 19 th November Wednesday 20th November Thursday 21 st – Friday 22 nd Nov Friday 22 nd November	All day 14:45 All day	Year 11 Spanish Speaking Mocks Year 11 Mock Interviews Early Finish Year 11 Drama Proposed Exam FOPS Winter Fair
25th – 29th November		Week 2
Monday 25 th – Tuesday 26 th November Monday 25 th November Wednesday 27th November Thursday 28 th November Friday 29th November	 14:45 All day	Year 11 French Speaking Mocks Year 7 Spelling Bee Year 11 Dance GCSE Exam 1 Early Finish Year 11 Drama Proposed Exam Year 8 Natural History and Imperial War Museum Trip Staff Training Day 3 – school closed to students
2nd – 6th December		Week 1
Monday 2nd December Tuesday 3 rd – Friday 6 th December Wednesday 4th December Thursday 5 th December	All day All week 14:45	Staff Training Day 4 – school closed to students Year 11 Mock Exams Early Finish Everyman Theatre Trip
9th – 13th December		Week 2
Monday 9 th – Friday 13 th December Wednesday 11th December Friday 13 th December	All week 14:45	Year 11 Mock Exams Early Finish Chelsea's Choice – Safeguarding Play Y8
16th – 20th December		Week 1
Monday 16 th December Wednesday 18th December Thursday 19 th December Friday 20th December	8.45 – 13.05 14:45 15:10	Year 8 Careers Fair Early Finish Christmas Concert End of Term 2
Monday 23rd December – Friday 4th January - End of Term 2 Holiday		

Term 3

4th – 10th January		Week 2
Wednesday 8th January Thursday 9 th January	14:45 16:00 – 19:00	Early Finish Year 11 Consultation Evening
13th – 17th January		Week 1
Monday 13 th January Tuesday 14 th January Wednesday 15 th – Thursday 16 th January Wednesday 15th January Thursday 16 th January	13:50 – 14:10 14:45	Year 11 Mock Results Year 11 Photos Year 8 Mock Exams Early Finish Reward Tie Evening
20th – 24th January		Week 2
Wednesday 22nd January Thursday 23 rd January	14:45 18:00 - 19:00	Early Finish Year 8 Options Information Evening
27th January – 31st January		Week 1
Wednesday 29th January	14:45	Early Finish
3rd – 7th February		Week 2
Monday 3 rd – Friday 7 th February Monday 3 rd February Wednesday 5th February Thursday 6 th February Friday 7 th February	All week 14:45 16:00 – 19:00	National Storytelling Week PE PEP Moderation Early Finish Intermediate Maths Challenge – Years 9,10 and 11 Year 8 Consultation Evening Year 8 Spoz Poetry Slam TBC
10th – 14th February		Week 1
Wednesday 12th February Friday 14th February	14:45 15:10	Early Finsh Year 8 Options Form Deadline End of Term 3
Monday 17th – Friday 21st February – End of Term 3 Holiday		

Term 4

24th – 28th February		Week 2
Monday 24 th – Thursday 27 th February Tuesday 25 th February Wednesday 26th February Thursday 27 th – Friday 28 th February	14:45	Year 9 Spanish Mocks Year 8 Spelling Bee Early Finish Year 9 French Mocks
2nd – 6th March		Week 1
Monday 2 nd – Tuesday 3 rd March Wednesday 4th March Thursday 5 th March	14:45 All day 16:00 – 19:00	Year 9 French Mocks Early Finish World Book Day Year 10 French Mocks Year 10 Consultation Evening
9th – 13th March		Week 2
Wednesday 11th March Thursday 12 th March	14:45	Early Finish Year 10 Spanish Mocks
16th – 20th March		Week 1
Wednesday 18th March Thursday 19 th – Friday 20 th March Thursday 19 th March	All day 14:45 16:00 – 19:00	French Day Early Finish Year 10 Spanish Mocks Voice In a Million Trip Year 9 Consultation Evening
23rd – 27th March		Week 2
Monday 23 rd – Wednesday 25 th March Wednesday 25th March Thursday 26 th – Friday 27 th March Thursday 26 th March Friday 27 th March	All day 14:45	Year 11 Mock Exams Early Finish Year 10 French Mocks Year 11 Dance GCSE Exam 2 Year 11 Dance GCSE Exam 3
30th March – 3rd April		Week 1
Tuesday 31 st March – Wednesday 1 st April Wednesday 1st April Thursday 2 nd April Friday 3rd April	14:45 16:00 – 19:00	School Show Drama Early Finish Year 7 Consultation Evening End of Term 4
Monday 6th – Friday 17th April – End of Term 4 Holiday		

Term 5

20th – 24th April		Week 2
Monday 22 nd – Tuesday 21 st April Wednesday 22nd April Thursday 23 rd April Friday 24 th April	14:45	Year 11 GCSE French Speaking Exam Early Finish Textiles 11D Exam (1/2 group) Year 11D Art Exam Textiles 11D Exam (1/2 group) Year 11D Art Exam
27th April – 1st May		Week 1
Monday 27 th – Tuesday 28 th April Tuesday 28 th April Wednesday 29th April Thursday 30 th April Thursday 30 th April – Friday 1st May	14:45	Year 11 GCSE Spanish Speaking Exam Textiles 11D Exam (1/2 group) Textiles 11D Exam (1/2 group) Early Finish Junior Maths Challenge – Years 7 and 8 Year 11 B and C Art Exam
4th – 8th May		Week 2
Wednesday 6th May Friday 8th May	14:45	Early Finish Bank Holiday school closed
11th – 15th May		Week 1
Monday 11 th May Wednesday 13th May	9:00 14:45	GCSEs Start Year 10 English Literature GCSE Exam Paper 1 Early Finish
18th – 22nd May		Week 2
Wednesday 20 th – Friday 22 nd May Wednesday 20th May Thursday 21 st May Friday 22nd May	14:45 9:00	Year 9 Berlin Trip Early Finish Year 10 English Literature GCSE Exam Paper 2 End of Term 5
Monday 25th May – Friday 29th May – End of Term 5 Holiday		

Term 6

1st – 5th June		Week 1
Monday 1 st – Friday 5 th June Wednesday 3rd June Thursday 4 th – Friday 5 th June	All week 14:45	Internal Exams Years 7 – 10 Early Finish Year 7 Science Festival Trip TBC
8th – 12th June		Week 2
Monday 8 th – Friday 12 th June Wednesday 10th June	All week 14:45	Internal Exams Years 7-10 Early Finish
15th – 19th June		Week 1
Monday 15 th – Friday 19 th June Monday 15 th – Wednesday 17 th June Tuesday 16 th June Wednesday 17th June	All week 14:45	Internal Exams Years 7-10 Sports Tour Holy Trinity Literacy Day - Year 8 Literacy Ambassadors Early Finish
22nd – 26th June		Week 2
Monday 22 nd – Friday 26 th June Wednesday 24th June Thursday 25 th June Friday 26 th June	All week 14:45	Internal Exams Years 7-10 Early Finish Reward Tie Evening Sliver D of E Expedition 1 (Practice)
29th June – 3rd July		Week 1
Sunday 28 th – Monday 29 th June Tuesday 30 th June Wednesday 1st July Thursday 2 nd and Friday 3 rd July	All day 14:45 18:00	Arras Trip – Year 10 Year 7 Play in a day Early Finish Year 6 Induction Evening Year 6 Induction Days
6th – 10th July		Week 2
Monday 6 th July Tuesday 7 th July Wednesday 8 th – Friday 10 th July Wednesday 8th July Thursday 9 th July Friday 10 th July	13:50 - 14:10 All day 14:45 13:50 – 15:10	Year 10 Exam Results Day Sports Day Year 10 Barcelona Trip SST Fun Day Early Finish Reserve Sports Day Sports Rewards Assembly
13th – 17th July		Week 1
Monday 13 th – Thursday 16 th July Monday 13 th – Thursday 16 th July Tuesday 14 th – Wednesday 15 th July Friday 17th July		Activities Week Year 7 – Year 9 Year 10 Work Experience Week D of E Bronze Expedition School finishes at 12.15 End of Term 6

PITTVILLE EXPECTS ...

Pittville School has expectations of students and adults in the school. These are set out below.

IN THE CLASSROOM	
We expect teachers and other adults to:	We expect students to:
<ul style="list-style-type: none"> • be punctual to lessons • be positive with students, valuing all equally • plan and deliver appropriate lessons • communicate to students how each lesson contributes to 'the big picture' of learning using learning objectives • tell students what they will learn in each lesson • check everyone's learning at the end of the lesson • provide a safe environment for learning • give help to students as soon as possible after they ask for it • finish lessons on time 	<ul style="list-style-type: none"> • arrive on time for lessons • speak politely to teachers and other students within the classroom • listen to teachers and to other students when they are asked to speak • follow instructions without questioning them • bring the correct equipment to all our lessons • remember the importance of respect • remain in seats unless asked to move • raise a hand to ask for help or answer a question • work towards our challenge levels at all times
AROUND THE SCHOOL	
We expect teachers and other adults to:	We expect students to:
<ul style="list-style-type: none"> • move quickly to the next lesson or • move into the corridor and wait for a class • remind all students of expectations in a positive, friendly way • keep to the left • set a good example by not eating or drinking around the school 	<ul style="list-style-type: none"> • move quickly to the next lesson • go upstairs sensibly • respect our school environment • keep to the left • avoid drinking and eating around the school • put all litter in the bins

Physical Education Department Kit List September 2019

PE Kit

GIRLS

Compulsory items:

Black/green t-shirt (fitted or non-fitted)
Black games skirt with black knickers
Black skort or black shadow stripe shorts
Black/green socks
Black Pittville sweatshirt
Training shoes (not pumps)
Shin Pads
Gum Shield

Optional items:

Pittville leggings
¼ zip jacket
Black tracksuit/jogging bottoms
Football boots
Sports bra

BOYS

Compulsory items:

Black/green reversible rugby shirt
Black/green shorts
Black/green games socks
New White T-Shirt with Green trim
(currently being confirmed by Schooltogs)
White games socks
Trainers
Football boots
Shin Pads
Gum Shield

Optional items:

Pittville Baselayer (top)

PITTVILLE SCHOOL UNIFORM

- Black blazer with Pittville School badge.
- White smart, cotton school shirt (must have top button, no fashion blouses). Top button fastened and tucked into waistbands.
- Plain black V-neck school jumper (no cardigans or PE/sportswear sweatshirts)
- Pittville School tie should be worn full length with the Pittville School logo visible. Done up to top button with school badge showing just below the knot.
- Coats can be worn to and from school or outside during break times only.
- Hoodies/sweatshirts are NOT allowed at any time.
- Pittville School polo shirt (summer term only) – must be a white polo shirt displaying the Pittville logo.
- Any headdress that is to be worn due to religious observance, including the hijab, yarmulke or turban, must be plain black.

BOYS

- Plain black tailored trousers.
- Plain black shoes with black laces (no trainers or boots)
- Plain grey, black or white socks.
- Boys underwear should not be visible above the trousers and trousers should be worn around the waist and not low around the hips.

GIRLS

- Plain black tailored trousers (no accessories such as fashion belts).
- Pittville skirt with logo is compulsory. Worn no higher than 5cm above the knee. Some students have the correct length of skirt but choose to roll it up when in school this is clear defiance of our school expectations and such students will automatically serve on after school detention on each occasion.
- Black shoes, flat or low heels (no pumps/trainers or boots).
- Plain black tights can be worn.
- Plain black or white ankle or knee length socks only – No over the knee socks

Additional info – no fashion extremes. No long cardigans, no light grey cardigans or jumpers or boots. No jumpers or cardigans to be worn in the hot weather when blazers are allowed not to be worn. Belts must be plain and black (no studs, no large metal buckles etc).

Jewellery – one pair of small silver or gold stud earrings. No other jewellery except a watch. Natural hair colour (with no extreme 'styling' – Mohawk, shaved 'tramlines' etc). No heavy makeup.

School Uniform Stockists

The school stockists are:

- Schooltogs – High Street, Cheltenham – 01242 523632
- Universal Uniform - Kingsville Rd, Swindon Village, Cheltenham GL51 9LX - 01242 580062

Always ask to be shown *Pittville* uniform. Students will be asked to change uniform, which is **not** Pittville regulation. **Check** with the school before buying if you are unsure.

This is the only list of what can be worn. Please keep it for reference.

What parents can do to help and avoid problems.

We ask parents to ensure that their children come to school each day in the proper school uniform. Students should be encouraged to take responsibility for organising their clothing, and making sure it is clean and ready to wear.

Please ensure your child's name is clearly marked on each item of school uniform.

If there is a problem on a particular day, **parents must write a letter** explaining the difficulty for that day. Items' being "in the wash" is not an acceptable reason for non-uniform.

SAFEGUARDING

Safeguarding is everyone's business: it is up to all of us to keep children safe.

A key priority for Pittville School is that all adults who work with our students take account of safeguarding and promote the welfare of children and young people. Our aim is to promote a culture of being a safe organisation for young people and the adults who work with them.

This is approached by:

- ensuring disclosure barring service checks are carried out on all who regularly deal directly with students or who have access to their personal information
- developing recruitment practice in line with guidance on safer recruitment practice
- working to promote a culture where there is a common understanding of risk management and judgement in relation to safeguarding
- ensuring allegations are dealt with quickly, fairly and with transparency and staff operate safe practice that does not leave them open to misunderstanding or malicious allegations
- giving staff guidance and training to enable them to recognise concerns about children and take responsibility for acting quickly on those concerns
- communicating child protection procedures to all staff, parents and visitors
- every individual signs an Acceptable Use Policy (AUP) before using the school network and abides by the conditions within

We would ask that should you hear, see or read anything which troubles you about a child, do not ignore it, but report your concerns to the Designated Safeguarding Lead at Pittville School – Mr Poole.

For further information on safeguarding contact the Gloucestershire Safeguarding Children's Board www.gscb.org.uk, telephone 01452 583629.

FRIENDS OF PITTVILLE SCHOOL

Pittville School values the tremendous input that parents provide to the life of the school and know that, by working together, we can help improve things for all our students. The Friends of Pittville School is a fantastic opportunity to bring together staff, governors, parents and friends of the community socially to support the school in working towards a common goal: the benefit of the children. Everyone's help is valued and we need as many parents, carers and friends of Pittville School to come forward and help us support our local school.

ATTENDANCE

At Pittville School we are committed to the continuous raising of achievement of all our students and we are proud of our attendance record. Regular attendance is critical if our students are to be successful and benefit from the opportunities presented to them. One of our main principles is to celebrate success and this is emulated in the attendance rewards we run throughout the year. Good attendance is fundamental to a successful and fulfilling school experience. We actively promote 100% attendance for all our students. Our School Attendance Target for all our students is 97%.

Parents and carers have a legal duty to ensure that their child attends school regularly and arrives on time. It is the parents/ carers responsibility to contact the school on each day their child is absent. This is a safeguarding issue so that all parties know that your child is safe. Parents should regularly update the school and inform on when their son/daughter is returning. Students are expected to arrive by 8.30am for morning registration which starts at 8.35am. All students arriving late must report to the student reception where the reason for lateness is recorded and a 30 minute detention is set. If your child's attendance falls below 90% they will be deemed to be a persistent absentee and may face action from the local authority.

Here at Pittville, we believe that full attendance is essential to the all-round development of the child and they should be allowed to take full advantage of educational opportunities available to them by law. Lower than expected attendance undermines their education and puts students at risk of under performance academically and has also been shown have an impact on further education opportunities and outcomes. We trust that you will do all you can to ensure your child has an excellent attendance record whilst on roll here at Pittville School, and please be assured that we will do all we can to support you with this.