

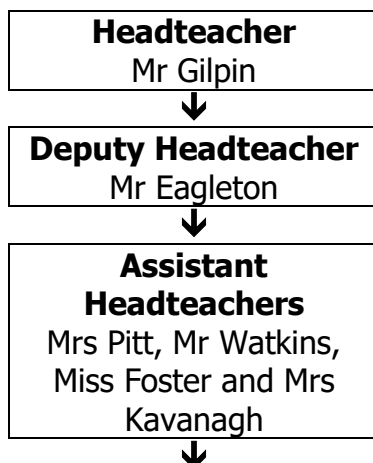
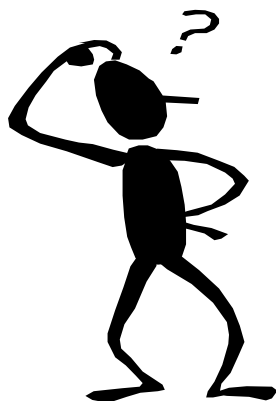


Information for Parents Booklet

2020 - 2021

Due to the current Covid restrictions dates/events on the school calendar are subject to change. We will inform you of changes via Edulink and the school website.

WHO'S WHO?



Abbott House	Aston House	Livingstone House	Stokes House
Miss Allan (Head of House)	Mrs Bury-Brunsdon (Head of House)	Mr Kavanagh (Head of House)	Mrs Crowe (Lead Tutor)
<p>Mrs Davies (Senior Pastoral Manager)</p> <p>gdavies@pittville.gloucs.sch.uk</p>			

Useful information and phone numbers

School Telephone Number	01242 524787
School Fax Number	01242 228750
School E-mail Number	achieve@pittville.gloucs.sch.uk
School Website	www.pittville.gloucs.sch.uk
Twitter	@PittvilleSchool
Educational Welfare Officer/Attendance	Mr Bond – 07715 083948
Shire Hall	01452 425000

Up to date copies of statutory policies can be found on our school website
www.pittville.gloucs.sch.uk

Term 1

Tuesday 1 st September	Y7 in school from 9am
Wednesday 2 nd September	Y7 in school Y11 in School from 11am Y7 photos
Thursday 3 rd September	All years in school Y10 photos
Tuesday 8 th September	International Literacy Day
Thursday 10 th September	Y7 meet the tutor evening
Friday 11 th September	Y9 HPV Injections (postponed from Y8)
Monday 14 th September	FOPS Meeting
Thursday 17 th September	Y10 HPV Injections (postponed from Y9) Y11 Information Evening – presentation only to be uploaded to website. Event not taking place.
14 th – 18 th September	Y7 CATS testing - delayed Y11 English Speaking Exams
Friday 25 th September	Spanish Day Year 8 Spanish Spelling Bee
28 th Sept – 2 nd October	Open week at Pittville – see website for details
Wednesday 30 th September	Open Evening I- see website for details
Thursday 1 st October	National Poetry Day
Wednesday 14 th October	Post 16 Evening
Monday 19 th October	FOPS Meeting
Thursday 22 nd October	Year 9 Information Evening and Parent Consultation with school reports
Thursday 22 nd October	Break up for half term
Friday 23 rd October	Inset Day – school closed to students.
School Holidays 26th – 30th October	

Term 2

Monday 2 nd November	Start of Term 2
Thursday 5 th November	Post-16 Event from 2pm
Monday 9 th November Monday 9 th November – Thursday 12 th November	Holy Trinity Primary School Writing Day Y7 and Y8 Readathon Week Y11 Maths and Science Walking Talking Mocks
Friday 13 th November	SEND Parent Group Meeting Spanish Flamenco Workshop
Monday 16 th November – Thursday 26 th November	Y11 Mock Exams
Monday 23 rd November Tuesday 24 th November Thursday 26 th November	PE House Matches all week Y7 Spelling Bee Chelsea's Choice (Safeguarding Play Y8) Reward Tie Evening
Friday 27 th November Monday 30 th November	Inservice Days – School Closed to Students
Thursday 3 rd December	Y8 Parents' Evening
Tuesday 8 th December Thursday 10 th December	Y7 Highbury Church Carol Concert Christmas Carol Concert
Monday 14 th December	Careers Fair
Wednesday 16 th December	Student Christmas Lunch
Friday 18 th December	Break up for Christmas

School Holidays
Friday 18th December – Monday 4th January

Term 3

Monday 4 th January	Inservice Day – School Closed to students
Tuesday 5 th January	Start of Term 3
Thursday 7 th January	Y11 Parents' Evening
Tuesday 12 th January	Y11 Photos
Thursday 14 th January	Y7 Parents' Evening with reports
Monday 26 th January – Thursday 28 th January	Y11 Food Prep - NEA2 Exam KS4 Music Recitals
Friday 29 th January	
Monday 1 st February	National Storytelling Week
Tuesday 2 nd February	Y8 Spelling Bee Y11 Food Prep - NEA2 Exam
Thursday 4 th February	Y10 Parents' Evening with reports Y11 Food Prep - NEA2 Exam
Friday 5 th February	Y8 Poetry Slam with Spoz
Monday 8 th – Friday 12 th February	Y11 Maths and Science Walking Talking Mocks
Friday 12 th February	Break up for Half Term

School Holidays
Monday 15th – Friday 19th February

Term 4

Monday 22 nd February	Start of Term 4
Monday 22 nd February – Friday 5 th March	Y11 Mock Exams
Monday 1 st March - Friday 5 th March	National Engineers Week
Thursday 4 th March	World Book Day
Monday 8 th March – Friday 12 th March	PE House Matches
Friday 12 th March	SEND Parents' Group
Monday 15 th March – Friday 19 th March	Shakespeare Week National Science Week
Friday 19 th March	French Day including Spelling Bee
Monday 22 nd March	Y11 Dance Exam
Tuesday 23 rd March	KS4 Music Ensemble Performance Recitals
Wednesday 24 th March	Y11 Dance Exam
Thursday 25 th March	Y11 Parents' Evening (targeted students). Reports issued
Thursday 1 st April	End of Term Ski trip departs
Friday 2 nd April	Good Friday
Monday 5 th April	Easter Monday

School Holidays
Friday 2nd April – Friday 16th April

Term 5

Monday 19 th April	Start of Term 5
Monday 26 th April	Y11 Languages and DT exams start from now onwards
Monday 3rd May	Bank Holiday
Tuesday 4 th – Friday 7 th May	PE House Matches
Tuesday 11 th May	Start of public exams
Thursday 27 th May	Y10 Parents' Evening – targeted students. Reports issued
Friday 28th May	End of Term
Monday 31st May	Bank Holiday
School Holidays Monday 31st May – Friday 4th June	

Term 6

Monday 7 th June	Start of Term 6
Tuesday 8 th - Friday 11 th June	Cheltenham Science Festival
Wednesday 9 th June	Y7 & 8 girls' district athletics at Prince of Wales Stadium
Wednesday 16 th June	Y7 & 8 girls' district athletics at Prince of Wales Stadium
Thursday 17 th June	Y9 Parents' Evening (targeted students)
Friday 18 th June	Public Examinations Close
Wednesday 23 rd June	Reward Tie Evening
Friday 25 th June	Y9 Enterprise Day
Wednesday 30 th June	Year 6 Transition Evening
Thursday 1 st and Friday 2 nd July	Y6 Induction days
Monday 5 th July	Big Bang Event Y9/10
Tuesday 6 th July	Sports Day at Prince of Wales Stadium
Wednesday 7 th July	Play in a Day
Thursday 8 th July	Reserve Sports Day
Friday 9 th July	Sports Awards Assembly
Monday 12 th – Friday 16 th July	Activities Week Work Experience Week
Wednesday 21 st July	End of Summer Term

PITTVILLE EXPECTS ...

Pittville School has expectations of students and adults in the school. These are set out below.

IN THE CLASSROOM	
We expect teachers and other adults to:	We expect students to:
<ul style="list-style-type: none"> • be punctual to lessons • be positive with students, valuing all equally • plan and deliver appropriate lessons • communicate to students how each lesson contributes to 'the big picture' of learning using learning objectives • tell students what they will learn in each lesson • check everyone's learning at the end of the lesson • provide a safe environment for learning • give help to students as soon as possible after they ask for it • finish lessons on time 	<ul style="list-style-type: none"> • arrive on time for lessons • speak politely to teachers and other students within the classroom • listen to teachers and to other students when they are asked to speak • follow instructions without questioning them • bring the correct equipment to all our lessons • remember the importance of respect • remain in seats unless asked to move • raise a hand to ask for help or answer a question • work towards our challenge levels at all times
AROUND THE SCHOOL	
We expect teachers and other adults to:	We expect students to:
<ul style="list-style-type: none"> • move quickly to the next lesson or • move into the corridor and wait for a class • remind all students of expectations in a positive, friendly way • keep to the left • set a good example by not eating or drinking around the school 	<ul style="list-style-type: none"> • move quickly to the next lesson • go upstairs sensibly • respect our school environment • keep to the left • avoid drinking and eating around the school • put all litter in the bins

Physical Education Department Kit List September 2020

PE Kit

GIRLS

Compulsory items:

Black/green t-shirt (fitted or non-fitted)
Black games skirt with black knickers
Black skort or black shadow stripe shorts
Black/green socks
Black Pittville sweatshirt
Training shoes (not pumps)
Shin Pads
Gum Shield

Optional items: (from Schooltogs)

Pittville leggings
¼ zip jacket
Black tracksuit/jogging bottoms
Football boots
Sports bra

BOYS

Compulsory items:

Black/green reversible rugby shirt
Black/green shorts
Black/green games socks
New White T-Shirt with Green trim
White games socks
Trainers
Football boots
Shin Pads
Gum Shield

Optional items: (from Schooltogs)

Pittville Baselayer (top)

PITTVILLE SCHOOL UNIFORM

- Black blazer with Pittville School badge.
- White smart, cotton school shirt (must have top button, no fashion blouses). Top button fastened and tucked into waistbands.
- Plain black V-neck school jumper (no cardigans or PE/sportswear sweatshirts)
- Pittville School tie should be worn full length with the Pittville School logo visible. Done up to top button with school badge showing just below the knot.
- Coats can be worn to and from school or outside during break times only.
- Hoodies/sweatshirts are NOT allowed at any time.
- Pittville School polo shirt (summer term only) – must be a white polo shirt displaying the Pittville logo.
- Any headdress that is to be worn due to religious observance, including the hijab, yarmulke or turban, must be plain black.

BOYS

- Plain black tailored trousers.
- Plain black shoes with black laces (no trainers or boots)
- Plain grey, black or white socks.
- Boys underwear should not be visible above the trousers and trousers should be worn around the waist and not low around the hips.

GIRLS

- Plain black tailored trousers (no accessories such as fashion belts).
- Pittville skirt with logo is compulsory. Worn no higher than 5cm above the knee. Some students have the correct length of skirt but choose to roll it up when in school this is clear defiance of our school expectations and such students will automatically serve on after school detention on each occasion.
- Black shoes, flat or low heels (no pumps/trainers or boots).
- Plain black tights can be worn.
- Plain black or white ankle or knee length socks only – No over the knee socks

Additional info – no fashion extremes. No long cardigans, no light grey cardigans or jumpers or boots. No jumpers or cardigans to be worn in the hot weather when blazers are allowed not to be worn. Belts must be plain and black (no studs, no large metal buckles etc).

Jewellery – one pair of small silver or gold stud earrings. No other jewellery except a watch. Natural hair colour (with no extreme 'styling' – Mohawk, shaved 'tramlines' etc). No heavy makeup.

School Uniform Stockists

The school stockists are:

- Schooltogs – High Street, Cheltenham – 01242 523632
- Universal Uniform - Kingsville Rd, Swindon Village, Cheltenham GL51 9LX - 01242 580062

Always ask to be shown *Pittville* uniform. Students will be asked to change uniform, which is **not** Pittville regulation. **Check** with the school before buying if you are unsure.

This is the only list of what can be worn. Please keep it for reference.

What parents can do to help and avoid problems.

We ask parents to ensure that their children come to school each day in the proper school uniform. Students should be encouraged to take responsibility for organising their clothing, and making sure it is clean and ready to wear.

Please ensure your child's name is clearly marked on each item of school uniform.

If there is a problem on a particular day, **parents must write a letter** explaining the difficulty for that day. Items' being "in the wash" is not an acceptable reason for non-uniform.

SAFEGUARDING

Safeguarding is everyone's business: it is up to all of us to keep children safe.

A key priority for Pittville School is that all adults who work with our students take account of safeguarding and promote the welfare of children and young people. Our aim is to promote a culture of being a safe organisation for young people and the adults who work with them.

This is approached by:

- ensuring disclosure barring service checks are carried out on all who regularly deal directly with students or who have access to their personal information
- developing recruitment practice in line with guidance on safer recruitment practice
- working to promote a culture where there is a common understanding of risk management and judgement in relation to safeguarding
- ensuring allegations are dealt with quickly, fairly and with transparency and staff operate safe practice that does not leave them open to misunderstanding or malicious allegations
- giving staff guidance and training to enable them to recognise concerns about children and take responsibility for acting quickly on those concerns
- communicating child protection procedures to all staff, parents and visitors
- every individual signs an Acceptable Use Policy (AUP) before using the school network and abides by the conditions within

We would ask that should you hear, see or read anything which troubles you about a child, do not ignore it, but report your concerns to the Designated Safeguarding Lead at Pittville School – Miss Bottell.

For further information on safeguarding contact the Gloucestershire Safeguarding Children's Board www.gscb.org.uk, telephone 01452 583629.

FRIENDS OF PITTVILLE SCHOOL

Pittville School values the tremendous input that parents provide to the life of the school and know that, by working together, we can help improve things for all our students. The Friends of Pittville School is a fantastic opportunity to bring together staff, governors, parents and friends of the community socially to support the school in working towards a common goal: the benefit of the children. Everyone's help is valued and we need as many parents, carers and friends of Pittville School to come forward and help us support our local school.

ATTENDANCE

At Pittville School we are committed to the continuous raising of achievement of all our students and we are proud of our attendance record. Regular attendance is critical if our students are to be successful and benefit from the opportunities presented to them. One of our main principles is to celebrate success and this is emulated in the attendance rewards we run throughout the year. Good attendance is fundamental to a successful and fulfilling school experience. We actively promote 100% attendance for all our students. Our School Attendance Target for all our students is 97%.

Parents and carers have a legal duty to ensure that their child attends school regularly and arrives on time. It is the parents/ carers responsibility to contact the school on each day their child is absent. This is a safeguarding issue so that all parties know that your child is safe. Parents should regularly update the school and inform on when their son/daughter is returning. Students are expected to arrive by 8.30am for morning registration which starts at 8.35am. All students arriving late must report to the student reception where the reason for lateness is recorded and a 30 minute detention is set. If your child's attendance falls below 90% they will be deemed to be a persistent absentee and may face action from the local authority.

Here at Pittville, we believe that full attendance is essential to the all-round development of the child and they should be allowed to take full advantage of educational opportunities available to them by law. Lower than expected attendance undermines their education and puts students at risk of under performance academically and has also been shown have an impact on further education opportunities and outcomes. We trust that you will do all you can to ensure your child has an excellent attendance record whilst on roll here at Pittville School, and please be assured that we will do all we can to support you with this.