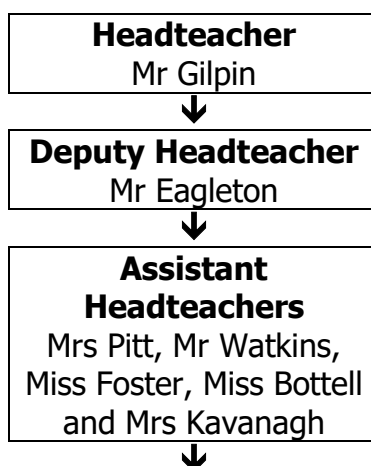
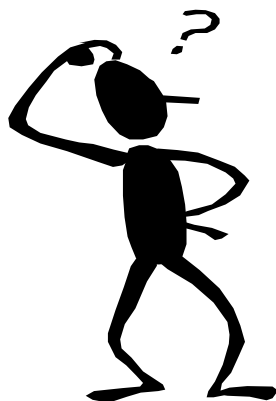




Information for Parents Booklet

2021 - 2022

WHO'S WHO?



Abbott House	Aston House	Livingstone House	Stokes House
Miss Allan (Head of House)	Mrs Bury-Brunsdon (Head of House)	Mr Kavanagh (Head of House)	Mrs Crowe (Lead Tutor)
Miss Clements Restorative Practice Lead	Mrs Coleman Restorative Practice Lead	Miss Hill Restorative Practice Lead	Mrs Swartz Restorative Practice Lead
Mrs Davies Senior Pastoral Manager - gdavies@pittville.gloucs.sch.uk			

Useful information and phone numbers

School Telephone Number	01242 524787
School E-mail Number	achieve@pittville.gloucs.sch.uk
School Website	www.pittville.gloucs.sch.uk
Twitter	@PittvilleSchool
Educational Welfare Officer/Attendance	Mr Bond – 07715 083948
Shire Hall	01452 425000

School Day

Wednesday – School Day

08:25	Arrive in school	8:25	Arrive in school
08:35 – 08.45	Morning Registration	8:35 – 8:45	Morning Registration
08:45 – 09:45	Lesson 1	8:45 – 9:45	Lesson 1
09:45 – 10:45	Lesson 2	9:45 – 10:45	Lesson 2
10:45 – 11:05	Break	10:45 – 11.05	Break
11:05 – 12:05	Lesson 3	11:05 – 12:05	Lesson 3
12:05 – 13:05	Lesson 4	12:05 – 13:05	Lesson 4
13:05 – 14:05	Lunch and tutor time	13:05 – 13.40	Lunch
14:05 – 14:10	Movement time	13:45 – 14:45	Afternoon Registration and Period 5
14:10 – 15:10	Lesson 5	14:45	End of day
15:10	End of day		

This is what a normal school day should look like. However, at the moment, due to Covid restrictions, we are staggering school break and lunch times.

Up to date copies of statutory policies can be found on our school website www.pittville.gloucs.sch.uk

Term 1

2nd and 3rd September		
Thursday 2nd September	All day	Staff Training Day 1 – school closed to students Year 7 and 11 students on site for Covid Testing Year 8 and 10 students on site for Covid Testing
Friday 3 rd September		
6th – 10th September		Week 1
Monday 6 th September	All day	Year 7 and 11 students in school Year 9 students on site for Covid Testing
Tuesday 7 th September	All day	All years in school Year 7 CATS tests
Tuesday 7 th – Friday 10 th Sept	All day	International Literacy Day Year 7 Photos
Wednesday 8 th September		
Friday 10th September	12:05	Early Finish
13th – 17th September		Week 2
Monday 13 th September		Year 10 Photos
Wednesday 15th September	14:45	Early Finish
20th – 24th September		Week 1
Monday 20th September		RSHE
Wednesday 22nd September	14:45	Early Finish
Thursday 23 rd September	16:00 – 18:00	Year 7 Tutor Evening Year 9 Lyme Regis Trip Drayton Manor Rewards Trip TBC
Thurs 23 rd – Friday 24 th September		
Friday 24 th September		
27th September – Friday 1st October		Week 2
Monday 27 th September – Fri 1 st Oct	All week	Open Week – Tours of the school
Monday 27 th September	All day	Year 8 Spanish Day
Wednesday 29th September	13:05	Early Finish
Friday 1 st October	18:00 – 20:00 All day	Open Evening Poetry Day
4th – 8th October		Week 1
Monday 4 th October	19:30	Groans Up Theatre Trip at Everyman Theatre Year 10 Geography Trip to The Gower
Monday 4 th – Wed 6 th October		
Tuesday 5th October		RSHE
Wednesday 6th October	14:45	Early Finish
11th – 15th October		Week 2
Monday 11 th – Friday 15 th October	All week	House Competition – Cross Country Year 10 Geog Trip to The Gower
Tuesday 12 th – Thurs 14 th October		
Wednesday 13th October	14:45 18:00	Early Finish Year 11 Post 16 Presentation Evening
18th – 22nd October		Week 1
Wednesday 20th October		RSHE
Wednesday 20 th & Thurs 21 st Oct	14:45 16:00 – 18:00	Early Finish Year 11 Parents' Evening
Friday 22nd October		Staff Training Day 2 – school closed to students End of Term 1
Monday 25th – Friday 29th October - End of Term 1 Holiday		

Term 2

1st – 5th November		Week 2
Wednesday 3 rd & Thursday 4 th November Wednesday 3rd November Thursday 4 th November	16:00 – 18:00 14:45 13:00	Year 10 Parents' Evening Early Finish Post 16 Careers Event
8th – 12th November		Week 1
Wednesday 10th November Thursday 11 th & Friday 12 th November Thursday 11th November	14:45 All day	Early Finish Year 11 Art & Textiles Mock Exam RSHE
15th – 19th November		Week 2
Monday 15 th – Friday 19 th November Wednesday 17th November Thursday 18 th November Friday 19 th November	All week 14:45 19:30	Year 11 Mock Exams Early Finish Blood Brothers Theatre Trip at Everyman Theatre Year 11 Leavers Certificate Afternoon Year 10 Art Trip to Tate Modern
22nd – 26th November		Week 1
Monday 22 nd – Thursday 25 th November Monday 26 th – Thursday 25 th November Wednesday 24th November Friday 26th November	All week All days 14:45 All day	Year 11 Mock Exams Year 11 Spanish Mock Speaking Exams Early Finish Staff Training Day 3 – school closed to students
29th November – 3rd December		Week 2
Monday 29th November Tuesday 30th November Tuesday 30 th November – Thursday 2 nd December Wednesday 1 st & Thursday 2 nd December Wednesday 1st December Friday 3 rd December	All day All days 16:00 – 18:00 14:45	Staff Training Day 4 – school closed to students RSHE Year 11 French Mock Speaking Exams Year 9 Parents' Evening Early Finish Chelsea's Choice – Safeguarding Play
6th – 10th December		Week 1
Monday 6 th – Friday 10 th December Wednesday 8th December Thursday 9 th December	All week 14:45 All day	House Competition – Rugby/Netball Early Finish Year 11 Dance Solo Assessment
13th – 17th December		Week 2
Monday 13 th December Wednesday 15th December Friday 17th December	 14:45	Year 9 Options Assembly Early Finish RSHE Head of House Tea End of Term 2
Monday 20th December – Monday 3rd January - End of Term 2 Holiday		

Term 3

3rd – 7th January		Week 1
Monday 3rd January Tuesday 4th January Wednesday 5th January	All day All day 14:45	Bank Holiday Staff Training Day 5 – school closed to students Early Finish
10th – 14th January		Week 2
Monday 10 th January Tuesday 11 th January Tuesday 11 th – Friday 14 th January Wednesday 12th January Wednesday 12 th – Friday 14 th Thursday 13th January	14:45	Year 9 options remote introduction Y11 Photos Year 9 remote Q & A talks Early Finish Whole school flu jabs RSHE Year 9 options market stall
17th – 21st January		Week 1
Monday 17 th & Tuesday 17 th January Wednesday 19th January Wednesday 19 th & Thursday 20 th January Friday 21 st January	14:45 16:00 – 18:00	Whole school flu jabs Early Finish Year 7 Parents' Evening Year 9 options deadline
24th – 28th January		Week 2
Tuesday 25 th – Friday 28 th January Wednesday 26th January Friday 28th January	All days 14:45	Year 11 FPN NEA2 Early Finish RSHE
31st January – 4th February		Week 1
Monday 31 st January – Friday 4 th February Monday 31 st January Tuesday 1 st – Friday 4 th February Wednesday 2nd February	All week All day All days 14:45	Storytelling week Year 11 BTEC Exams start TBC Year 8 soft choice options assembly Year 11 FPN NEA2 Early Finish Year 9 Careers Fair
7th - 11th February		Week 2
Monday 7 th February Tuesday 8 th – Friday 11 th February Wednesday 9th February Wednesday 9 th & Thursday 10 th February Thursday 10 th – Wednesday 16 th February	14:45 16:00 – 18:00 All days	Year 8 soft options remote introduction Year 8 remote Q & A talks Early Finish Year 8 Parents Evening New York Trip
14th – 18th February		Week 1
Thursday 10 th – Wednesday 16 th Feb Monday 14th February Wednesday 16th February Thursday 17 th February Friday 18th February	All days 14:45	New York Trip RSHE Early Finish Head of House Tea End of Term 3
Monday 21st – Friday 26th February – End of Term 3 Holiday		

Term 4

28th February – 4th March		Week 2
Wednesday 2nd March Thursday 3 rd March	14:45 All day	Early Finish World Book Day
7th – 11th March		Week 1
Monday 7 th – Friday 11 th March Tuesday 8th March Wednesday 9th March	All week All week 14:45	Year 11 mock exams Readathon RSHE Early Finish
14th – 18th March		Week 2
Monday 14 th – Friday 18 th March Wednesday 16th March	All week All week 14:45	Year 11 mock exams Year 10 Spanish mock speaking exams Early Finish
21st – 25th March		Week 1
Monday 21 st March Tuesday 22 nd – Wednesday 23 rd March Wednesday 23rd March Thursday 24 th March	All day All days 14:45	Year 10 Spanish mock speaking exams Year 10 French mock speaking exams Early Finish RSHE Year 11 Dance solo/duet performance
28th March – 1st April		Week 2
Monday 28 th March – Friday 1 st April Wednesday 30th March Thursday 31 st March	All week 14:45 All day	House competition – Football/Hockey Early Finish Year 11 Dance choreography exam
4th – 8th April		Week 1
Monday 4 th April Wednesday 6 th April Wednesday 6th April Wednesday 6 th & Thursday 7 th April Thursday 7th April Friday 8rd April	All day 14:45 16:00 – 18:00	Potential GCSE PE AQA Live practical moderation Reward Event Early Finish Year 11 Parents' Evening RSHE Head of House Tea End of Term 4
Monday 11th – Friday 22nd April – End of Term 4 Holiday		

Term 5

25th – 29th April		Week 2
Tuesday 26 th – Friday 26 th April Wednesday 27 th April Friday 29th April	All days 14:45	Year 11 Art & Textiles Exam Early Finish RSHE
2nd – 6th May		Week 1
Monday 2nd May Tuesday 3 rd – Thursday 5 th May Wednesday 4th May	All day All days 14:45	Bank Holiday Year 11 Spanish speaking exams Early Finish
9th – 13th May		Week 2
Monday 9th May Wednesday 11th May Tuesday 10 th – Friday 13 th May	All day 14:45 All days	Year 11 Spanish speaking exams RSHE Early Finish Year 11 French speaking exams
16th – 20th May		Week 1
Wednesday 18th May	14:45	Early Finish
23rd – 27th May		Week 2
Tuesday 24th May Wednesday 25th May Thursday 26 th May Friday 27th May	14:45	RSHE Early Finish Head of House Tea End of Term 5
Monday 30th May – Friday 3rd June – End of Term 5 Holiday		

Term 6

6th – 10th June		Week 1
Monday 6 th – Friday 10 th June Wednesday 8th June	All week All week 14:45	Cheltenham Science Festival week Year 10 End of year exams Early Finish
13th – 17th June		Week 2
Monday 13 th – Friday 17 th June Wednesday 15th June	All week All week 14:45	Year 10 End of year exams House competition – Cricket/Rounders Early Finish RSHE
Wednesday 15 th & Thursday 16 th June	16:00 – 18:00	Year 7 Parents' Evening
20th – 24th June		Week 1
Monday 27 th June – Friday 1 st July Wednesday 22 nd – Friday 24 th June Wednesday 22nd June	All week All days 14:45	Year 10 End of year exams Sports Tour Early Finish
27th June – 1st July		Week 2
Wednesday 24th June Thursday 30th June	14:45	Early Finish RSHE
Thursday 30 th & Friday 1 st July	16:00 – 18:00 All days	Tutor Evening Year 10 French Arras Trip TBC
4th – 8th July		Week 1
Tuesday 5 th July Wednesday 6st July	All day 14:45 18:00	Sports Day Early Finish Year 6 Induction Evening
Thursday 7 th & Friday 8 th July	All days	Year 6 Induction Days
11th – 15th July		Week 2
Monday 11 th – Friday 15 th July Monday 11 th July Wednesday 13 th July Wednesday 13th July Thursday 14 th July Friday 15th July	All week All day 14:45 All day	Work Experience week TBC Year 10 trip to Cirencester College Reserve Sports Day Early Finish Year 7 French Day Head of House Tea RSHE Reward Event
18th – 22nd July		Week 1
Monday 18 th – Wednesday 19 th July Thursday 21 st July Thursday 21st July	All days	Activities Week Whole school walk End of Term 6

PITTVILLE EXPECTS ...

Pittville School has expectations of students and adults in the school. These are set out below.

IN THE CLASSROOM	
We expect teachers and other adults to:	We expect students to:
<ul style="list-style-type: none"> • be punctual to lessons • be positive with students, valuing all equally • plan and deliver appropriate lessons • communicate to students how each lesson contributes to 'the big picture' of learning using learning objectives • tell students what they will learn in each lesson • check everyone's learning at the end of the lesson • provide a safe environment for learning • give help to students as soon as possible after they ask for it • finish lessons on time 	<ul style="list-style-type: none"> • arrive on time for lessons • speak politely to teachers and other students within the classroom • listen to teachers and to other students when they are asked to speak • follow instructions without questioning them • bring the correct equipment to all our lessons • remember the importance of respect • remain in seats unless asked to move • raise a hand to ask for help or answer a question • work towards our challenge levels at all times
AROUND THE SCHOOL	
We expect teachers and other adults to:	We expect students to:
<ul style="list-style-type: none"> • move quickly to the next lesson or • move into the corridor and wait for a class • remind all students of expectations in a positive, friendly way • keep to the left • set a good example by not eating or drinking around the school 	<ul style="list-style-type: none"> • move quickly to the next lesson • go upstairs sensibly • respect our school environment • keep to the left • avoid drinking and eating around the school • put all litter in the bins

Physical Education Department Kit List September 2021 - 2022

PE Kit

GIRLS

Compulsory items:

Pittville black and green games t-shirt (fitted or non-fitted)
Pittville black and green games skort
OR
Pittville black and green games shorts
Pittville black and green socks (long)
Pittville white and green fitted summer V neck with collar (Indoor activities & Easter to Summer only)

OR

Pittville white and green unisex t-shirt (round neck) - (Easter to Summer only)

Trainer shoes (not pumps)

Shin pads

Gum shield

Optional items:

Pittville black leggings

Fitted ¼ zip training jacket/top

Football boots (boots with studs)

Sports bra

Pittville black fitted track pants

(KS4 - Year 10 and 11 only)

BOYS

Compulsory items:

Pittville black and green reversible shirt (Sept to Easter)

Pittville black and green games shorts

Pittville black and green games socks (long)

Pittville white and green unisex t-shirt (round neck) - (Indoor activities & Easter to Summer only)

Trainer shoes

Football boots (boots with studs)

Shin pads

Gum shield

Optional items:

Pittville base layer (under top)

Pittville base layer tights

Pittville black fitted track pants

(KS4 - Year 10 and 11 only)

PITTVILLE SCHOOL UNIFORM

- Black blazer with Pittville School badge.
- White smart, cotton school shirt (must have top button, no fashion blouses). Top button fastened and tucked into waistbands.
- Plain black V-neck school jumper (no cardigans or PE/sportswear sweatshirts)
- Pittville School tie should be worn full length with the Pittville School logo visible. Done up to top button with school badge showing just below the knot.
- Coats can be worn to and from school or outside during break times only.
- Hoodies/sweatshirts are NOT allowed at any time.
- Pittville School polo shirt (summer term only) – must be a white polo shirt displaying the Pittville logo.
- Any headdress that is to be worn due to religious observance, including the hijab, yarmulke or turban, must be plain black.

BOYS

- Plain black tailored trousers.
- Plain black shoes with black laces (no trainers or boots)
- Plain grey, black or white socks.
- Boys underwear should not be visible above the trousers and trousers should be worn around the waist and not low around the hips.

GIRLS

- Plain black tailored trousers (no accessories such as fashion belts).
- Pittville skirt with logo is compulsory. Worn no higher than 5cm above the knee. Some students have the correct length of skirt but choose to roll it up when in school this is clear defiance of our school expectations and such students will automatically serve on after school detention on each occasion.
- Black shoes, flat or low heels (no pumps/trainers or boots).
- Plain black tights can be worn.
- Plain black or white ankle or knee length socks only – No over the knee socks

Additional info – no fashion extremes. No long cardigans, no light grey cardigans or jumpers or boots. No jumpers or cardigans to be worn in the hot weather when blazers are allowed not to be worn. Belts must be plain and black (no studs, no large metal buckles etc).

Jewellery – one pair of small silver or gold stud earrings. No other jewellery except a watch.
Natural hair colour (with no extreme 'styling' – Mohawk, shaved 'tramlines' etc). No heavy makeup.

School Uniform Stockists

The school stockists are:

- Schooltogs – High Street, Cheltenham – 01242 523632
- Universal Uniform - Kingsville Rd, Swindon Village, Cheltenham GL51 9LX - 01242 580062

Always ask to be shown *Pittville* uniform. Students will be asked to change uniform, which is **not** Pittville regulation. **Check** with the school before buying if you are unsure.

This is the only list of what can be worn. Please keep it for reference.

What parents can do to help and avoid problems.

We ask parents to ensure that their children come to school each day in the proper school uniform. Students should be encouraged to take responsibility for organising their clothing, and making sure it is clean and ready to wear.

Please ensure your child's name is clearly marked on each item of school uniform.

If there is a problem on a particular day, **parents must write a letter** explaining the difficulty for that day. Items' being "in the wash" is not an acceptable reason for non-uniform.

SAFEGUARDING

Safeguarding is everyone's business: it is up to all of us to keep children safe.

A key priority for Pittville School is that all adults who work with our students take account of safeguarding and promote the welfare of children and young people. Our aim is to promote a culture of being a safe organisation for young people and the adults who work with them.

This is approached by:

- ensuring disclosure barring service checks are carried out on all who regularly deal directly with students or who have access to their personal information
- developing recruitment practice in line with guidance on safer recruitment practice
- working to promote a culture where there is a common understanding of risk management and judgement in relation to safeguarding
- ensuring allegations are dealt with quickly, fairly and with transparency and staff operate safe practice that does not leave them open to misunderstanding or malicious allegations
- giving staff guidance and training to enable them to recognise concerns about children and take responsibility for acting quickly on those concerns
- communicating child protection procedures to all staff, parents and visitors
- every individual signs an Acceptable Use Policy (AUP) before using the school network and abides by the conditions within

We would ask that should you hear, see or read anything which troubles you about a child, do not ignore it, but report your concerns to the Designated Safeguarding Lead at Pittville School – Miss Bottell.

For further information on safeguarding contact the Gloucestershire Safeguarding Children's Board www.gscb.org.uk, telephone 01452 583629.

FRIENDS OF PITTVILLE SCHOOL

Pittville School values the tremendous input that parents provide to the life of the school and know that, by working together, we can help improve things for all our students. The Friends of Pittville School is a fantastic opportunity to bring together staff, governors, parents and friends of the community socially to support the school in working towards a common goal: the benefit of the children. Everyone's help is valued and we need as many parents, carers and friends of Pittville School to come forward and help us support our local school.

ATTENDANCE

At Pittville School we are committed to the continuous raising of achievement of all our students and we are proud of our attendance record. Regular attendance is critical if our students are to be successful and benefit from the opportunities presented to them. One of our main principles is to celebrate success and this is emulated in the attendance rewards we run throughout the year. Good attendance is fundamental to a successful and fulfilling school experience. We actively promote 100% attendance for all our students. Our School Attendance Target for all our students is 97%.

Parents and carers have a legal duty to ensure that their child attends school regularly and arrives on time. It is the parents/ carers responsibility to contact the school on each day their child is absent. This is a safeguarding issue so that all parties know that your child is safe. Parents should regularly update the school and inform on when their son/daughter is returning. Students are expected to arrive by 8.30am for morning registration which starts at 8.35am. All students arriving late must report to the student reception where the reason for lateness is recorded and a 30 minute detention is set. If your child's attendance falls below 90% they will be deemed to be a persistent absentee and may face action from the local authority.

Here at Pittville, we believe that full attendance is essential to the all-round development of the child and they should be allowed to take full advantage of educational opportunities available to them by law. Lower than expected attendance undermines their education and puts students at risk of under performance academically and has also been shown have an impact on further education opportunities and outcomes. We trust that you will do all you can to ensure your child has an excellent attendance record whilst on roll here at Pittville School, and please be assured that we will do all we can to support you with this.