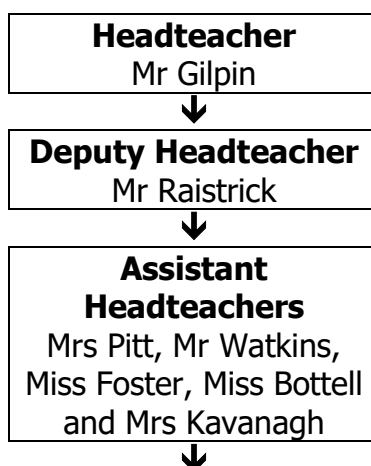
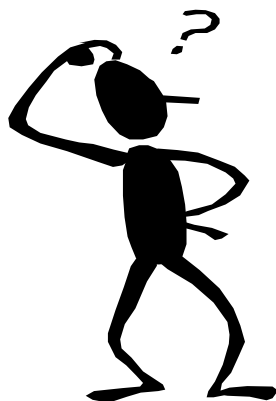




Information for Parents Booklet

2022 - 2023

WHO'S WHO?



Abbott House Miss Allan (Head of House)	Aston House Mrs Bury-Brunsdon (Head of House)	Livingstone House Mr Kavanagh (Head of House)	Stokes House Mrs Crowe (Lead Tutor)
Mrs Coleman and Mr Evans Restorative Practice Lead			
Mrs Davies, Mrs Swartz and Mrs Bishop-Lyford Deputy Designated Safeguarding Leads			

Useful information and phone numbers

School Telephone Number	01242 524787
School E-mail Number	achieve@pittville.gloucs.sch.uk
School Website	www.pittville.gloucs.sch.uk
Twitter	@PittvilleSchool
Educational Welfare Officer/Attendance	Miss Fitzpatrick – 07715 083948
Shire Hall	01452 425000

School Day

Wednesday – School Day

08:25	Arrive in school	8:25	Arrive in school
08:35 – 09:00	Morning Registration	8:35 – 8:45	Morning Registration
09:00 – 10:00	Lesson 1	8:45 – 9:45	Lesson 1
10:00 – 11:00	Lesson 2	9:45 – 10:45	Lesson 2
11:00 – 11:20	Break	10:45 – 11:05	Break
11:20 – 12:20	Lesson 3	11:05 – 12:05	Lesson 3
12:20 – 13:20	Lesson 4	12:05 – 13:05	Lesson 4
13:20 – 14:10	Lunch and tutor time	13:05 – 13:45	Lunch
14:10 – 15:10	Lesson 5	13:45 – 14:45	Period 5
15:10	End of day	14:45	End of day

Up to date copies of statutory policies can be found on our school website www.pittville.gloucs.sch.uk

Term 1

5th – 9th September		
Monday 5th September	All day	Staff Training Day 1 – school closed to students
6th – 9th September		Week 1
Tuesday 6 th September	All day	Year 7 and 11 students in school
Wednesday 7 th September	All day	Year 7 Photos
Tuesday 7 th – Friday 9 th September		All years in school
Friday 9 th September		Year 7 CATS tests
Friday 9th September	12:05	Early Finish
12th – 16th September		Week 2
Monday 12 th September		Year Ahead meeting Y7 and Y8 6-7pm
Tuesday 13 th September		Year Ahead meeting Y10 6-7pm
19th – 23rd September		Week 1
Tuesday 20th September		RSHE
26th – Friday 30th September		Week 2
Monday 26 th September – Fri 30 th September	All week	Open Week – Tours of the school
Wednesday 28 th September		Open Evening 6-8pm
Wednesday 28th September	13:05	Early Finish
3rd – 7th October		Week 1
Wednesday 5 th October		Year Ahead meeting Y11 6-7pm
Thursday 6th October		RSHE
10th – 14th October		Week 2
Thursday 13 th October		Y7 Tutor evening
Friday 14 th October		Chelsea's Choice - Safeguarding Play Y8
17th – 21st October		Week 1
Monday 17th October		RSHE
Thursday 20 th October		Year 11 Parents' Evening
Friday 21st October		Staff Training Day 2 – school closed to students
Monday 24th – Friday 28th October - End of Term 1 Holiday		

Term 2

31st October – 4th November		Week 2
7th – 11th November		Week 1
14th – 18th November		Week 2
21st – 25th November		Week 1
Thursday 24th November Friday 25th November	All day	RSHE Staff Training Day 3 – school closed to students
28th November – 2nd December		Week 2
Monday 28th November Friday 2nd December	All day	Staff Training Day 4 – school closed to students RSHE
5th – 10th December		Week 1
Wednesday 8 th December Thursday 9 th December		Year 10 Parents evening (online) Year 10 Parents evening (online)
12th – 16th December		Week 2
Monday 12th December Monday 12 th December		RSHE Year 9 options assembly Head of House Tea End of Term 2
Monday 19th December – Monday 2nd January - End of Term 2 Holiday		

Term 3

2nd – 6th January		Week 1
Monday 2nd January Tuesday 3rd January	All day All day	Bank Holiday Staff Training Day 5 – school closed to students
9th – 13th January		Week 2
Tuesday 10 th January Thursday 12 th January		Year 11 Photos Year 11 Parents evening (in person)
16th – 20th January		Week 1
All week Friday 20th January		Year 9 remote options RSHE
23rd – 27th January		Week 2
Thursday 26 th January		Year 9 Parents evening (in person)
30th January – 3rd February		Week 1
Monday 30th January Thursday 2 nd February		RSHE Year 9 Options deadline
6th - 10th February		Week 2
Monday 6 th – Wednesday 8 th February Thursday 9th February		Year 8 remote options RSHE
13th – 17th February		Week 1
Friday 17th February		End of Term 3
Monday 20th – Friday 24th February – End of Term 3 Holiday		

Term 4

27th February – 3rd March		Week 2
Thursday 2 nd March	All day	World Book Day
6th – 10th March		Week 1
Friday 10th March		RSHE
13th – 17th March		Week 2
20th – 24th March		Week 1
Tuesday 21st March		RSHE
27th - 31st March		Week 2
Thursday 30th March Friday 31st March		RSHE End of Term 4
Monday 3rd – Friday 14th April – End of Term 4 Holiday		

Term 5

17th – 21st April		Week 1
Thursday 20 th April		Year 8 Parents evening (in person)
24th – 28th April		Week 2
Friday 28th April		RSHE
1st – 5th May		Week 1
Monday 1st May	All day	Bank Holiday
8th – 12th May		Week 2
Monday 8th May		RSHE
15th – 19th May		Week 1
Wednesday 17 th May Thursday 18 th May		Year 7 Parents evening (online) Year 7 Parents evening (online)
22nd – 26th May		Week 2
Thursday 25th May Friday 26th May		RSHE End of Term 5
Monday 29th May – Friday 2nd June – End of Term 5 Holiday		

Term 6

5th – 9th June		Week 1
12th – 16th June		Week 2
Friday 16th June		RSHE
19th – 23rd June		Week 1
26th – 30th June		Week 2
Thursday 29 th June		Tutor Evening (online)
3rd – 7th July		Week 1
Monday 3rd July		RSHE
Wednesday 5 th July Thursday 6 th & Friday 7 th July	18:00 All days	Year 6 Induction Evening Year 6 Induction Days
10th – 14th July		Week 2
Monday 10 th – Friday 14 th July	All week	Work Experience week TBC
Thursday 13th July		RSHE
17th – 21st July		Week 1
Monday 17 th – Friday 21 st July	All days	Activities Week TBC
24th – 25th July		Week 2
Tuesday 25th July		End of Term 6

PITTVILLE EXPECTS ...

Pittville School has expectations of students and adults in the school. These are set out below.

IN THE CLASSROOM	
We expect teachers and other adults to:	We expect students to:
<ul style="list-style-type: none"> • be punctual to lessons • be positive with students, valuing all equally • plan and deliver appropriate lessons • communicate to students how each lesson contributes to 'the big picture' of learning using learning objectives • tell students what they will learn in each lesson • check everyone's learning at the end of the lesson • provide a safe environment for learning • give help to students as soon as possible after they ask for it • finish lessons on time 	<ul style="list-style-type: none"> • arrive on time for lessons • speak politely to teachers and other students within the classroom • listen to teachers and to other students when they are asked to speak • follow instructions without questioning them • bring the correct equipment to all our lessons • remember the importance of respect • remain in seats unless asked to move • raise a hand to ask for help or answer a question • work towards our challenge levels at all times
AROUND THE SCHOOL	
We expect teachers and other adults to:	We expect students to:
<ul style="list-style-type: none"> • move quickly to the next lesson or • move into the corridor and wait for a class • remind all students of expectations in a positive, friendly way • keep to the left • set a good example by not eating or drinking around the school 	<ul style="list-style-type: none"> • move quickly to the next lesson • go upstairs sensibly • respect our school environment • keep to the left • avoid drinking and eating around the school • put all litter in the bins

Physical Education Department Kit List 2022 - 23

PE Kit

<p>GIRLS</p> <p>Compulsory items: Pittville black and green games t-shirt (fitted or non-fitted)</p> <p>Pittville black and white trim games skort OR Pittville black and green games shorts</p> <p>Pittville black and green socks (long)</p> <p>Pittville white and green fitted summer V neck with collar (Indoor activities & Easter to Summer only) OR Pittville white and green unisex t-shirt (round neck) - (Easter to Summer only)</p> <p>Trainer shoes (not pumps) Shin pads; Gum shield</p> <p>Optional items: Pittville black leggings Fitted ¼ zip training jacket/top Football boots (boots with studs) Sports bra Pittville black fitted track pants (KS4 - Year 10 and 11 only)</p>	<p>BOYS</p> <p>Compulsory items: Pittville black and green reversible shirt (Sept to Easter)</p> <p>Pittville black and green games shorts</p> <p>Pittville black and green games socks (long)</p> <p>Pittville white and green unisex t-shirt (round neck) - (Indoor activities & Easter to Summer only)</p> <p>Trainer shoes Football boots (boots with studs) Shin pads; Gum shield</p> <p>Optional items: Pittville base layer (under top) Pittville base layer tights Pittville black fitted track pants (KS4 - Year 10 and 11 only)</p>
---	--

PITTVILLE SCHOOL UNIFORM

- Black blazer with Pittville School badge.
- White smart, cotton school shirt (must have top button, no fashion blouses). Top button fastened and tucked into waistbands.
- Plain black V-neck school jumper (no cardigans or PE/sportswear sweatshirts)
- Pittville School tie should be worn full length with the Pittville School logo visible. Done up to top button with school badge showing just below the knot.
- Coats can be worn to and from school or outside during break times only.
- Hoodies/sweatshirts are NOT allowed at any time.
- Pittville School polo shirt (summer term only) – must be a white polo shirt displaying the Pittville logo.
- Any headdress that is to be worn due to religious observance, including the hijab, yarmulke or turban, must be plain black.

BOYS	GIRLS
<ul style="list-style-type: none"> • Plain black tailored trousers. • Plain black shoes with black laces (no trainers or boots, no logos) • Plain grey, black or white socks. • Boys underwear should not be visible above the trousers and trousers should be worn around the waist and not low around the hips. 	<ul style="list-style-type: none"> • Plain black tailored trousers (no accessories such as fashion belts). • Pittville skirt with logo is compulsory. Worn no higher than 5cm above the knee. Some students have the correct length of skirt but choose to roll it up when in school this is clear defiance of our school expectations and such students will automatically serve on after school detention on each occasion. From September 2022 the pleated skirt with school logo is compulsory for year 7; from September 2023 the pleated skirt with school logo will be the only skirt permissible to wear. • Black shoes, flat or low heels (no pumps/trainers or boots). • Plain black tights can be worn. • Plain black or white ankle or knee length socks only – No over the knee socks

Additional info – no fashion extremes. No long cardigans, no light grey cardigans or jumpers or boots. No jumpers or cardigans to be worn in the hot weather when blazers are allowed not to be worn. Belts must be plain and black (no studs, no large metal buckles etc).

Jewellery – one pair of small silver or gold stud earrings. No other jewellery except a watch. Natural hair colour (with no extreme 'styling' – Mohawk, shaved 'tramlines' etc). No heavy makeup. A discreet religious symbol may also be worn.

No other jewellery is allowed. All items will be confiscated in line with our confiscation policy.

School Uniform Stockists

The school stockists are:

- Schooltogs, Monkhouse Schoolwear– 252 High Street, Cheltenham GL50 3HF – 01242 523632
- Universal Uniform - Kingsville Rd, Swindon Village, Cheltenham GL51 9LX - 01242 580062

Always ask to be shown *Pittville* uniform. Students will be asked to change uniform, which is **not** Pittville regulation. **Check** with the school before buying if you are unsure.

This is the only list of what can be worn. Please keep it for reference.

What parents can do to help and avoid problems.

We ask parents to ensure that their children come to school each day in the proper school uniform. Students should be encouraged to take responsibility for organising their clothing, and making sure it is clean and ready to wear.

Please ensure your child's name is clearly marked on each item of school uniform.

If there is a problem on a particular day, **parents must write a letter** explaining the difficulty for that day. Items' being "in the wash" is not an acceptable reason for non-uniform.

SAFEGUARDING

Safeguarding is everyone's business: it is up to all of us to keep children safe.

A key priority for Pittville School is that all adults who work with our students take account of safeguarding and promote the welfare of children and young people. Our aim is to promote a culture of being a safe organisation for young people and the adults who work with them.

This is approached by:

- ensuring disclosure barring service checks are carried out on all who regularly deal directly with students or who have access to their personal information
- developing recruitment practice in line with guidance on safer recruitment practice
- working to promote a culture where there is a common understanding of risk management and judgement in relation to safeguarding
- ensuring allegations are dealt with quickly, fairly and with transparency and staff operate safe practice that does not leave them open to misunderstanding or malicious allegations
- giving staff guidance and training to enable them to recognise concerns about children and take responsibility for acting quickly on those concerns
- communicating child protection procedures to all staff, parents and visitors
- every individual signs an Acceptable Use Policy (AUP) before using the school network and abides by the conditions within

We would ask that should you hear, see or read anything which troubles you about a child, do not ignore it, but report your concerns to the Designated Safeguarding Lead at Pittville School – Miss Bottell.

For further information on safeguarding contact the Gloucestershire Safeguarding Children's Board www.gscb.org.uk, telephone 01452 583629.

FRIENDS OF PITTVILLE SCHOOL

Pittville School values the tremendous input that parents provide to the life of the school and know that, by working together, we can help improve things for all our students. The Friends of Pittville School is a fantastic opportunity to bring together staff, governors, parents and friends of the community socially to support the school in working towards a common goal: the benefit of the children. Everyone's help is valued and we need as many parents, carers and friends of Pittville School to come forward and help us support our local school.

ATTENDANCE

At Pittville School we are committed to the continuous raising of achievement of all our students and we are proud of our attendance record. Regular attendance is critical if our students are to be successful and benefit from the opportunities presented to them. One of our main principles is to celebrate success and this is emulated in the attendance rewards we run throughout the year. Good attendance is fundamental to a successful and fulfilling school experience. We actively promote 100% attendance for all our students. Our School Attendance Target for all our students is 97%.

Parents and carers have a legal duty to ensure that their child attends school regularly and arrives on time. It is the parents/ carers responsibility to contact the school on each day their child is absent. This is a safeguarding issue so that all parties know that your child is safe. Parents should regularly update the school and inform on when their son/daughter is returning. Students are expected to arrive by 8.30am for morning registration which starts at 8.35am. All students arriving late must report to the student reception where the reason for lateness is recorded and a 30 minute detention is set. If your child's attendance falls below 90% they will be deemed to be a persistent absentee and may face action from the local authority.

Here at Pittville, we believe that full attendance is essential to the all-round development of the child and they should be allowed to take full advantage of educational opportunities available to them by law. Lower than expected attendance undermines their education and puts students at risk of underperformance academically and has also been shown have an impact on further education opportunities and outcomes. We trust that you will do all you can to ensure your child has an excellent attendance record whilst on roll here at Pittville School, and please be assured that we will do all we can to support you with this.