



# PITTVILLE SCHOOL

## UNIFORM GUIDANCE

Albert Road, Cheltenham GL52 3JD

Tel 01242 524787

Stockists of Pittville School uniform are listed below

1. Batemans Sports, 2 Kendrick Street, Stroud GL5 1AB. Tel 01453 764320
2. Monkhouse Schoolwear Specialists, 252 High Street, Cheltenham GL50 3HF. Tel 01242 523632

# UNIFORM GUIDANCE

At Pittville School, we believe the school uniform achieves three important goals:

- It encourages a sense of community, identity, and pride.
- It encourages our students to develop habits for life.
- It can help to limit unkindness or bullying while keeping costs down.

However, for our uniform policy to be successful, it must be implemented universally and without exception. We ask our parents to understand this and so support us at home to uphold the school's high standards.

## CONFISCATIONS

### Guidelines

If a student is wearing any unacceptable items at school, they will be expected to remove it immediately. The item(s) will be kept securely and will be returned at the end of the half term.

If a student refuses to hand over an unacceptable item they will be placed into the Internal Exclusion Room.

If the items are not handed over by the end of the school day the student may incur a 1-day fixed term suspension.

At the return from suspension meeting, the banned item, needs to be brought to the meeting, to be handed over and confiscated until the end of the half term.

# SCHOOL UNIFORM

At Pittville School, we only allow skirts, blazers and ties that are purchased through our suppliers. Please note that some items are compulsory, whereas others are optional.

## **Compulsory items:**

Black blazer with Pittville School badge

Pittville School tie

Pittville School pleated skirt with the logo visible

Trousers for boys/girls, plain black

White collared shirt

Plain charcoal, navy, white or black tights or socks.

Plain black flat shoes (no trainers or visible logos)

Any students not in possession of one of the items of compulsory uniform without an acceptable reason, may be asked to borrow from our uniform cupboard. Finally, if a student is refusing to correct their uniform students will be sanctioned.

# UNIFORM

## Boys' Uniform

Black blazer with Pittville School badge

Black trousers

White shirt (tucked in)

White Pittville Polo shirt for summer\*

Pittville School tie\*

Black V-neck jumper (optional)

Grey or black socks

Black shoes (no trainers)

Any headdress that is to be worn due to religious observance, including the hijab, yarmulke or turban, must be plain black.

*\* Ties and regulation polo shirts can be purchased from our uniform suppliers*

## Girls' Uniform

Black blazer with Pittville School badge

Black trousers

Black school logo skirt worn no higher than 5cm above the knees.

Plain white blouse or shirt (tucked in)

White Pittville Polo shirt for summer\*

Pittville School tie\*

Plain black V-neck jumper (optional)

Black or tan tights, black, white, or grey socks for girls to be worn all times (no bare feet allowed). Short socks for girls are allowed

Black shoes, flat or with low heels (no pumps, trainers, or boots)

Any headdress that is to be worn due to religious observance, including the hijab, yarmulke or turban, must be plain black.

*\* Ties and regulation polo shirts can be purchased from our uniform suppliers*

## Outerwear

Black outer coat, raincoat, or anorak of your choice

Provision of an outer coat will be essential in cold weather. Fleeces, hoodies, sweatshirts, or jumpers other than a black school jumper or cardigan are not permitted.

## PE Kit

### **GIRLS**

#### **Compulsory items:**

Pittville black and green games t-shirt  
(fitted or non-fitted)

Pittville black and white trim games skort  
OR

Pittville black and green games shorts

Pittville black and green socks (long)

Pittville white and green fitted summer V  
neck with collar (Indoor activities & Easter  
to Summer only)

OR

Pittville white and green unisex t-shirt  
(round neck) - (Easter to Summer only)

Trainer shoes (not pumps)

Shin pads

Gum shield

#### **Optional items:**

Pittville black leggings

Fitted ¼ zip training jacket/top

Football boots (boots with studs)

Sports bra

Pittville black fitted track pants

(KS4 - Year 10 and 11 only)

### **BOYS**

#### **Compulsory items:**

Pittville black and green reversible shirt  
(Sept to Easter)

Pittville black and green games shorts

Pittville black and green games socks  
(long)

Pittville white and green unisex t-shirt  
(round neck) - (Indoor activities & Easter  
to Summer only)

Trainer shoes

Football boots (boots with studs)

Shin pads

Gum shield

#### **Optional items:**

Pittville base layer (under top)

Pittville base layer tights

Pittville black fitted track pants

(KS4 - Year 10 and 11 only)



# TROUSERS & SKIRTS

## Trousers

Black tailored trousers.

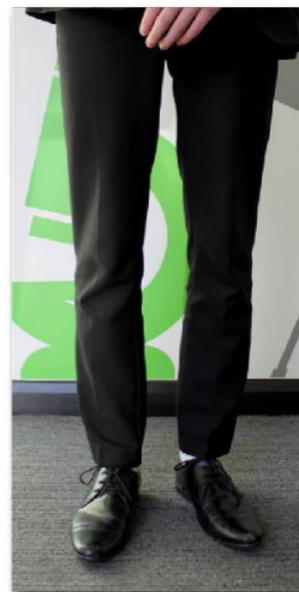
Trousers must be plain black, tailored, and formal, straight cut or bootleg, woven fabric. No patches, extra pocket, no denim, no leggings, no cords, or hipsters. Black belts only.

Underwear should not be visible above the trousers and trousers should be worn around the waist and not low around the hips.

### Pleated skirts

School logo skirt. Worn to a length just above the knee.

Students failing to wear their uniform correctly will be sanctioned.





# FOOTWEAR



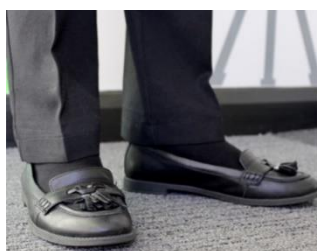
School shoes should be black, flat and no visible logos, with dark shoelaces. The style should be traditional. Some specific styles that are not permitted:

- Styles that appear to be more like sports trainers than professional black shoes.
- Large boots
- Suede shoes
- Styles with obvious logos or branding
- Elaborate buckles or decorations or patterns

However, this list is not exhaustive and the school's decision on what is/is not acceptable is final.

If parents are unsure as to whether a particular style will be accepted, they must send a picture of the shoe to the school before purchasing.

**Parents** who are struggling to find acceptable affordable shoes are encouraged to contact the school who will be happy to recommend appropriate footwear.



# BELTS

Belts must:

- Be black or dark in colour.
- Have a small, professional buckle.
- Have no obvious branding.
- Not have large buckles/decorative buckles

# HAIR

Students' hair must be in a conventional and understated style. Any hair clips or hair bands must be subtle in colour and style.

Some specific styles that are not permitted:

- Patterns shaved into a student's hair or eyebrows.
- High or flamboyant hairstyles.
- Any unnatural colours
- Any other hairstyles or adornments that the school considers inappropriate

However, this list is not exhaustive and the school's decision on what is/is not acceptable is final.

Students whose haircut is not deemed by the school to be an acceptable style will be placed in Internal Exclusion until a parent/carer arranges for the student to have the haircut changed.



# JEWELLERY

- A watch and one plain small pair of ear studs only
- No facial piercings, including nose and eyebrow studs.
- A discreet religious symbol may also be worn.

No other jewellery is allowed. All items will be confiscated in line with our confiscation guidelines.

# MAKE UP AND NAILS

- No coloured nail varnish, no coloured gel, no coloured shellac or false coloured nails, like acrylic.
- Clear nail polish is permitted.
- Nails grown to a length that is deemed a health and safety issue, will need to be cut down.
- As a guide, when looking at the nail from the inside/palm side of the hand, this should not extend noticeably over the fingertip. If nails are longer than this, then they are not acceptable.

**Sanction:** Students will be asked to remove inappropriate make-up/nail varnish and cut nails if deemed too long and/or placed into the Internal Exclusion Room until this issue is corrected.

- False eyelashes are not permitted.

**Sanction:** Students will be asked to remove excessive make-up, lenses and lashes and placed into the Internal Exclusion Room until the issue is corrected.

# COATS/JACKETS

In cold and wintery months, we believe it is essential for students to wear a coat.

Coats should be worn over the top of the school blazer and are an addition to the blazer, not instead of.

Blazers are to be worn at all times, unless directed otherwise by the Headteacher.

Coats can only be worn inside the building in the corridors.

## Contact Us

Pittville School

Albert Road

Cheltenham

GL52 3JD

Phone 01242 524787

[Achieve@pittville.gloucs.sch.uk](mailto:Achieve@pittville.gloucs.sch.uk)